

# SANUVOX

# ASEPT.2X

MOBILE UV STERILIZATION SYSTEM



# SANUVOX

## WARNING

Never expose eyes or skin to ultraviolet light from any source. The UV system **MUST** be **DISCONNECTED** from power source before performing maintenance or service. Personal injury may result.

## WARNING

Do not touch Lamp glass without gloves. Reduced performance of Lamp may result. Clean Lamp after handling.

## WARNING

The UV Lamp contains a small quantity of mercury. If a Lamp breaks, clean and dispose of with care.

## WARNING

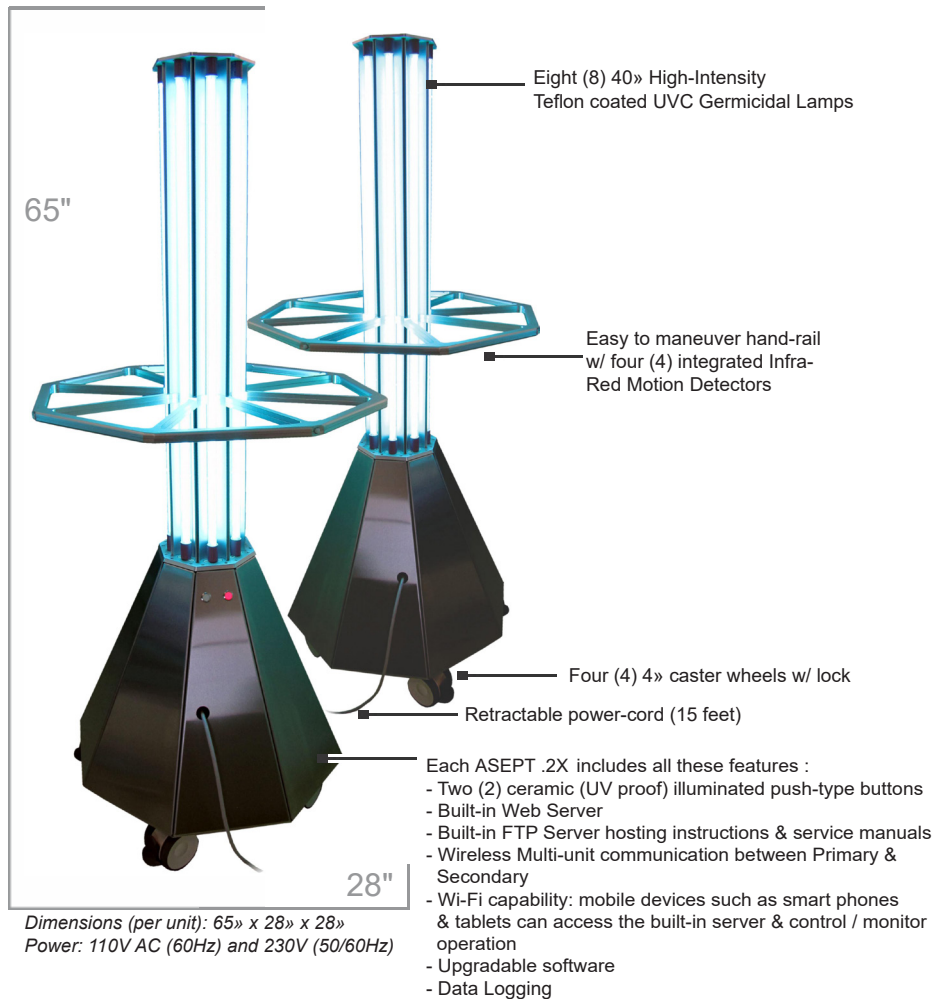
Use only specified replacement Lamps with the UV system. Use of an incorrect Lamp can result in damage to the system and/or Lamp.

## WARNING

Before installing or performing maintenance on the unit, turn off the main switch and disconnect from power source. Electrical shock may cause injury or death.

## NOTICE

UV lamp can be disposed/recycled after use as any other fluorescent lamp. Contact your local authorities for specific instructions.



## SAFETY CONSIDERATIONS

Do not expose unprotected eyes or skin to direct UV light. It is recommended to wear protective goggles and cover exposed skin when operating the unit. The ASEPT.2X Mobile UV Disinfection Unit is designed to be used in unoccupied spaces.

## GENERAL

ASEPT.2X mobile UV disinfection system will sterilize a standard patient room in less than 10 minutes when using two units, thus minimizing the shadow area problem. If using single unit, you may have to reposition the unit to perform a second cycle.

## HANDLING CONSIDERATION

Lifting of the ASEPT.2X should always be performed by at least two people using the hand-rail. Make sure proper lifting techniques are used and that the people performing the lifting task are evenly distributed around the hand-rail.

To move the ASEPT.2X to the desired location, first ensure that it is unplugged from the power inlet and that the powercord is fully retracted. After, simply unlock the 4caster wheels and push/pull the unit by the hand-rail to where you want it to be moved. Once in position, it is recommended to lock the casterwheels.

## CLEANING CONSIDERATION

Only use a damp cloth with soft soap to clean the exterior of the unit. Under no circumstances should spraying water be done. Doing so could damage the electrical components located in the housing.

## ASEPT.2X: UV DISINFECTION PROCESS

For full instructions on how to operate the ASEPT.2X, watch the training video available on Youtube : <https://youtube.com/watch?v=D27aj1iiUME>



### STEP #1 No occupants in room

Before starting the disinfection process, be sure the room is vacant of patient(s) & staff. Nobody can be in the room during the 10 minutes UV disinfection process. Should someone enter the room during a disinfection cycle, the Infra-Red motion detectors will automatically turn OFF the system. This interrupted cycle will be displayed as an error code on the Smart Device and on the LED Push Buttons located on the Primary unit (flashing RED LED and GREEN LED OFF). The ASEPT.2X system can operate in a room with windows. The UVC germicidal light does not penetrate glass. The Infra-Red motion detectors do not sense movement through glass.

### STEP #2 Prepare room for disinfection

Remove bed linen & raise hand-rails. Place any "high-touch" items in clear view of the ASEPT.2X units. Make sure items such as tubes, monitors, remote controls and tables are placed near the UV systems.

### STEP #3 Placement of Primary & Secondary ASEPT.2X

UV disinfection is a line-of-sight technology. Ideally, place the UV system to shine directly on any "high-touch" items near the patient's bed. The use of the dual UV system minimizes shadow areas making for a faster and effective disinfection process.

For areas such as a bathroom, one ASEPT.2X unit can be placed within the bathroom to disinfect the area. An ASEPT.1X automatic unit in the bathroom is a good option to minimize time and increase effectiveness of personnel. If using the ASEPT.2X unit in a small bathroom, shorter cycle could be used.

### STEP #4 Using the ASEPT.2X System

*For understanding the Push Button LED lights and manual operation please refer to next page.*

Once both units are placed in the ideal location. Extend the retractable power cord. There is 15ft. of cord length to allow both the Primary & Secondary units to be plugged into a wall outlet. There is a MAIN Power toggle switch located on the bottom of each unit that must be in the ON position prior to operation.

The switch can be found by looking for the blue POWER icon located on the base of the ASEPT.2X.

### STEP #5 Controlling the ASEPT.2X Unit with a SMART DEVICE

With a computer or Smart Device (Wi-Fi enabled) select the wireless network: ASEPTIX###.

Enter password: **AseptixUV** (case sensitive). Open your browser and in the address bar type the following address: <http://192.168.0.1> and press ENTER. The Smart Device must be within the wireless range of the ASEPT.2X to work. You may want to enter the web address to your "Favorites".

### STEP #6 Using the Smart Device interface

The ASEPT.2X web page will open that will allow you to control the ASEPT.2X unit.

The following can be found on the ASEPT.2X webpage:

1. **Admin Mode:** This allows the user to perform troubleshooting and access the Data log function
2. **FAQ's:** Documents are available on-line
3. **Language:** Options include English, French, Spanish and German
4. **Enter Room Identification** that will Log the disinfection cycle
5. **Start / Stop** button
6. **Countdown Timer:** This window will have both the 30 second pre-timer and 10 min. disinfection cycle timer
7. **Error:** Any error will be displayed in this window



Example of a typical ASEPT.2X unit placement to minimize shadow areas



An example of the ASEPT.2X being used in a patient room



## STEP #7 ASEPT.2X Activation

Upon pressing "START" on the Smart Device or in Manual mode, the ASEPT.2X will begin its "countdown operation" (Figure A.). On the Smart Device you will see a countdown from 30 seconds. There will also be a series of audible beeps from the ASEPT.2X unit that will progressively get faster until it reaches zero (0) seconds at which time both Primary and Secondary unit will activate illuminating the room with UVC light (Figure B.). **There must be no occupants in the room upon activation.** Should a person remain in the room or enter the room during the 10 minute disinfection process, the Infra-Red Motion Detectors will automatically turn the system OFF and the corresponding ERROR code will be displayed on the Smart Device and on the LED Push Button Display (see Error code sequence below).

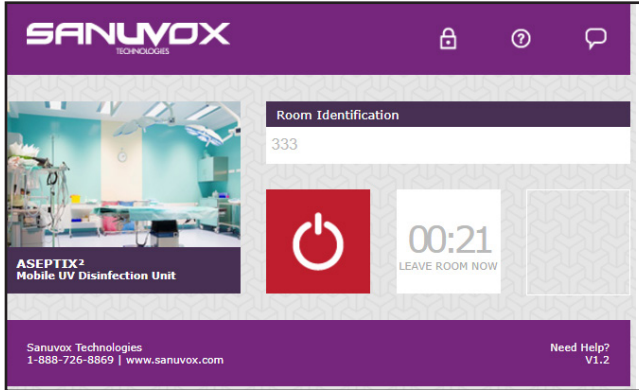


Figure A. The pre-timer "countdown operation" gives the user 30 seconds to leave the room prior to the ASEPT.2X activating

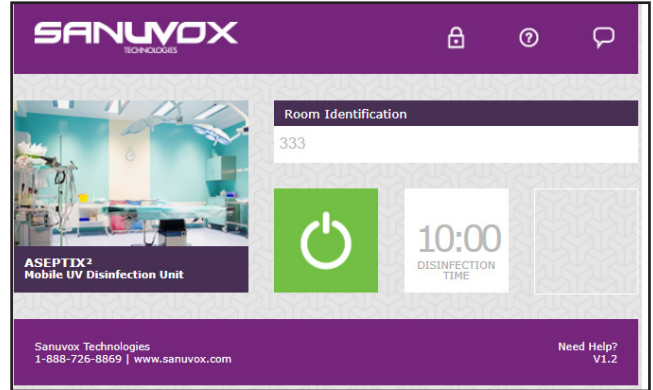


Figure B. Once the "countdown timer" elapses, the ASEPT.2X begins the disinfection cycle which will last 10 minutes.

## STEP #8 Completed Disinfection Cycle (10 min.)

Upon successful disinfection cycle, the Smart Device will notify the user of completion. The LED Push Button Display will notify the user as well (see Push Button display below).

### Manual Control

The ASEPT.2X may be manually operated by the Push Buttons (GREEN 'ON') on the Primary unit. If the unit will be used manually, the data log function will record the disinfection process but the room will be designated as "Room + Date + Hour" by default. To begin Manual operation press the GREEN LED Push Button.

### Understanding the LED Push Button Display

Regardless if the ASEPT.2X is being used in manual mode or via a Smart Device, status information will be provided via the LED Push Buttons.

#### STAND-BY

Both Primary & Secondary units are plugged in and paired to each other. Both buttons will stay ON solid RED & GREEN. Ready for disinfection process.

#### CYCLE-STARTED

An uninterrupted cycle lasts for 10 minutes. During this 10 minutes cycle only the RED buttons will stay ON solid RED.

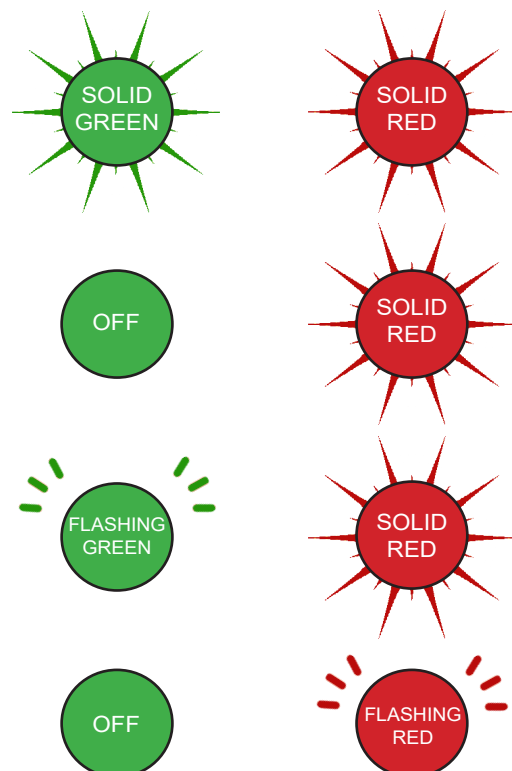
#### CYCLE-COMPLETED

After an uninterrupted 10 minutes disinfection cycle the GREEN button will flash and the RED button will stay ON solid RED


#### ERROR

In the event of an error (i.e. Motion, Sync, Communication) the GREEN button will be OFF and the RED button will flash.

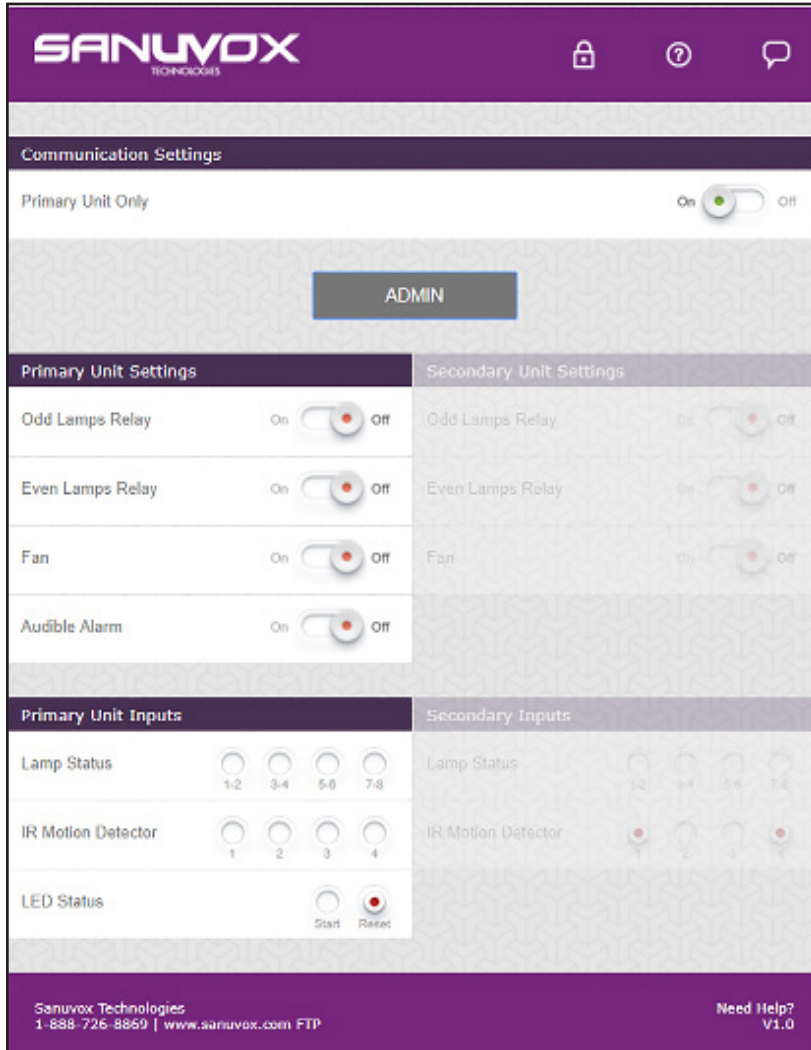
\*Refer to a Smart Device for the specific error code.



## Admin Mode

The Admin page can be accessed by clicking the “Lock” icon  on the ASEPT.2X webpage. The Admin page is password protected. Sanuvox will provide the default password and a password may be changed by the administrator.

The Admin Page allows for various options including:



The operation of the ASEPT.2X unit in single mode (dual mode is not currently available).



By sliding the toggle switches, it facilitates troubleshooting the different components that make up the ASEPT.2X system.

These include:

- Lamp Relays
- Fan
- Alarm



The following sliding indicators can be used to troubleshoot:

- Lamp Status
- Individual Infra Red Motion Detectors
- LED Status

## Admin Mode to access Data Log information

- You must gain access to the FTP site with a laptop or desktop computer by following instructions set out in STEP #5 Controlling the ASEPT.2X Unit with a SMART DEVICE and follow instructions on accessing Admin Mode.
- Visit FTP site by clicking on “FTP” link (see Figure A.) and download the \*.csv file(s). Save \*.csv file inside a desktop / laptop computer folder.
- Save “MergeLog.bat” file from ASEPT.2X into the folder with the \*.csv file.
- Double click on MergeLog.bat file & the data will merge into a DataLog.csv file where the disinfection cycles can be viewed.

Information supplied in the master “DataLog.csv” will contain DATE / ROOM / STATUS CODE information.

For troubleshooting please call Sanuvox at 1-888-726-8869 or email [info@sanuvox.com](mailto:info@sanuvox.com) where a team member will help you with your issue.